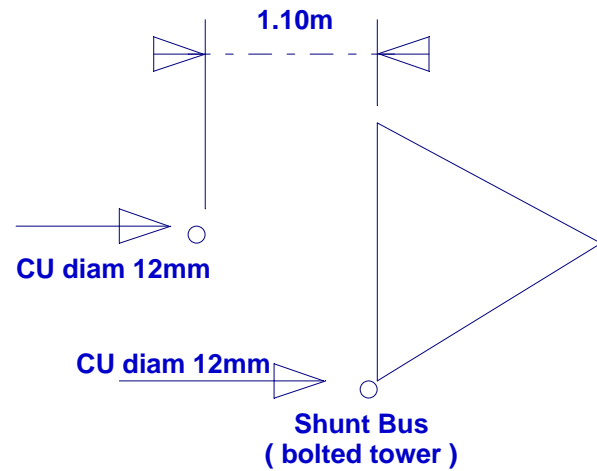
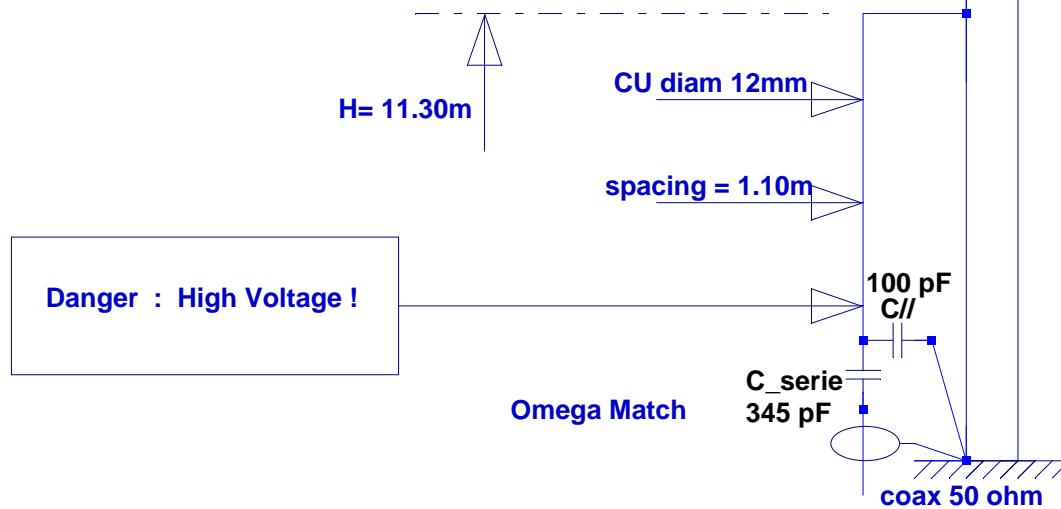


Top Load :
 - Cushcraft ASL2010 Logperiodic 10->20m
 - Boom of 4 el duo bander 30 & 40m
 half elements remotly disconnected on topband



Trylon Tower
 model AB105
 H= 27m
 face = 24" 61cm



F6AOJ
 11 / 2006

160m
 Shunt Feed
 Vertical